



WELCOME

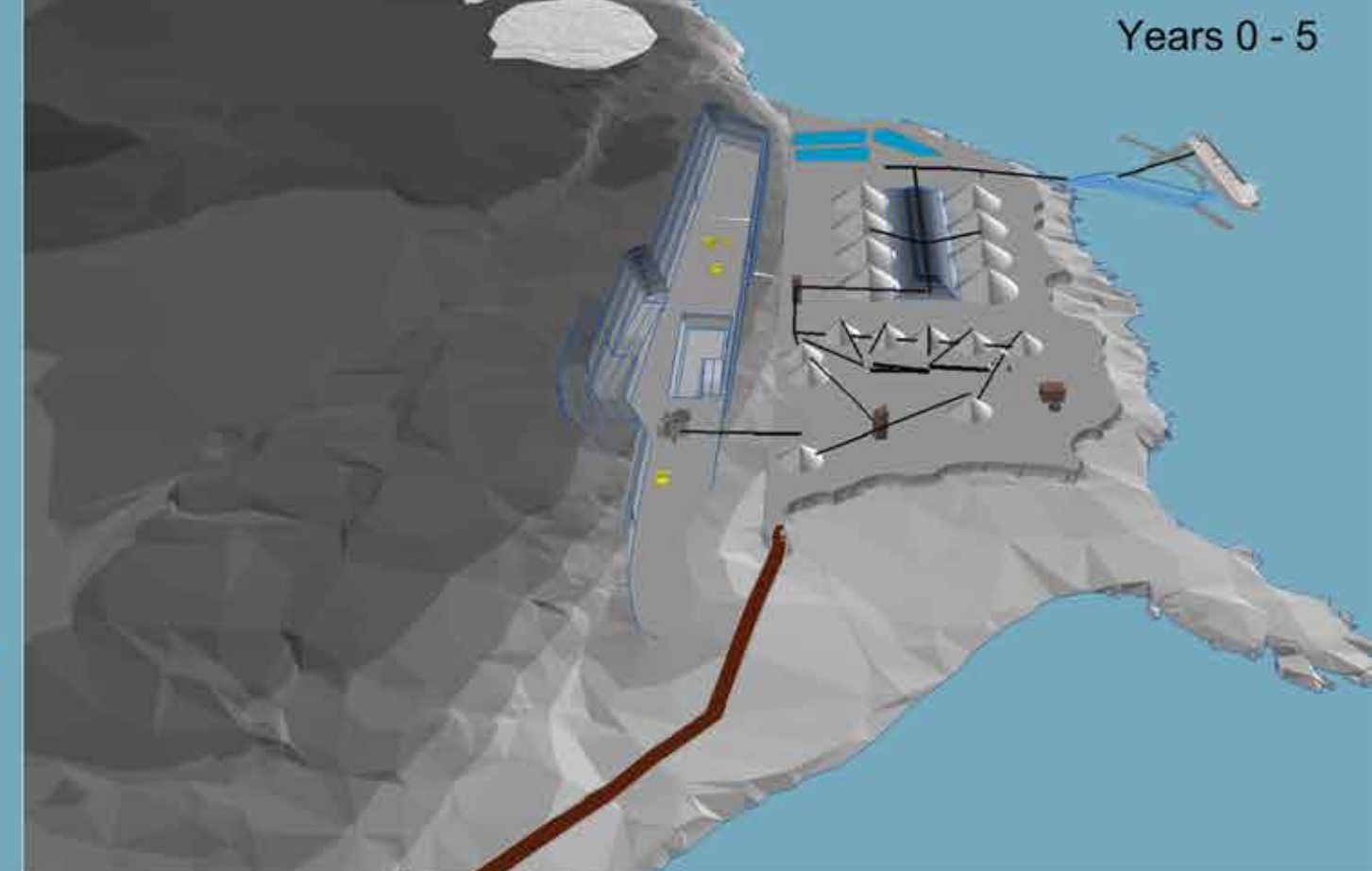
PURPOSE OF THE OPEN HOUSE

- To introduce Vulcan Materials Company and Morien Resources Corp.
- To introduce the Black Point Quarry Project
- To present the Project Description and overview of the environmental assessment process
- To receive your feedback on the Project
- To outline future opportunities for public involvement

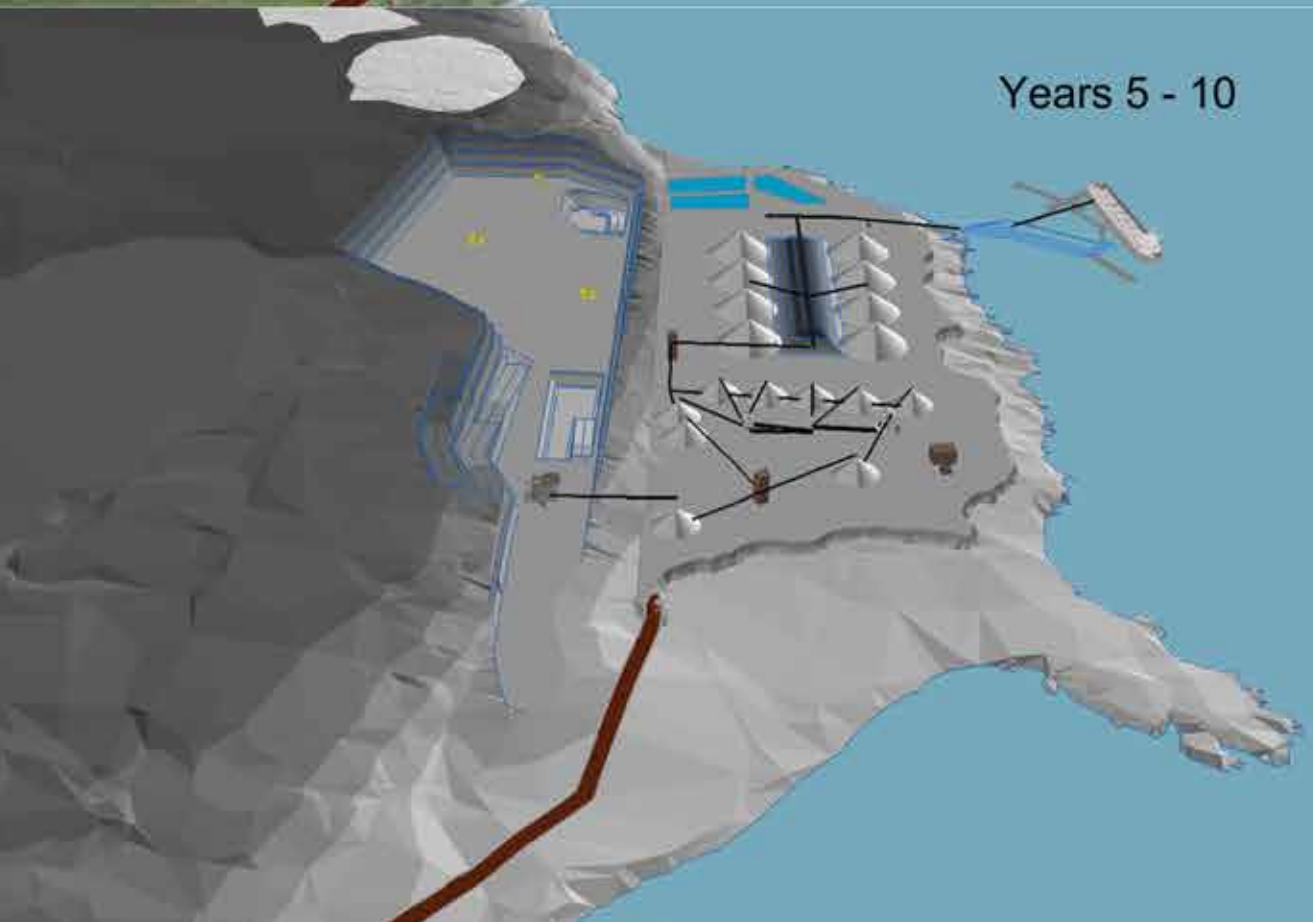
Site Development



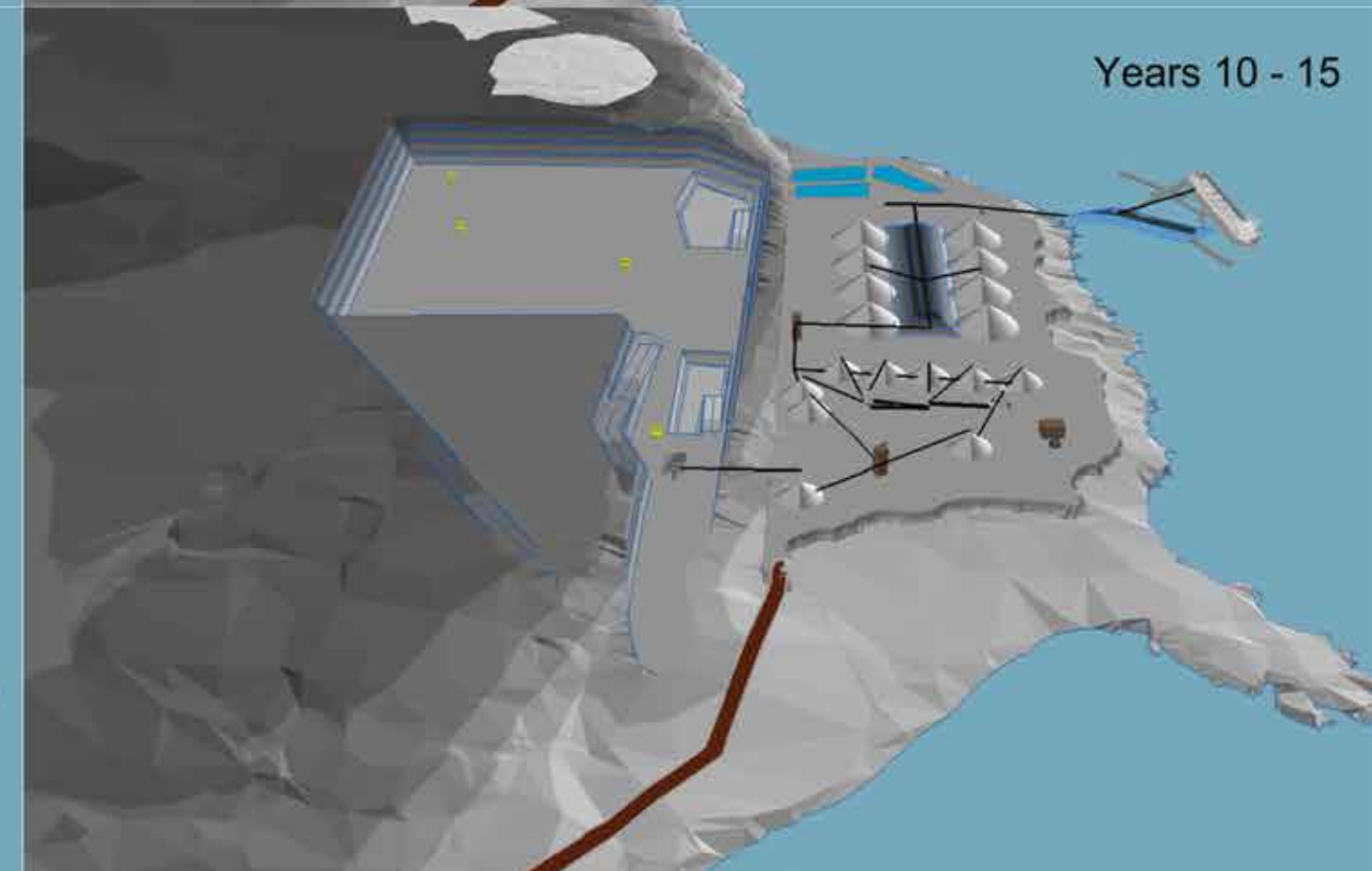
Years 0 - 5



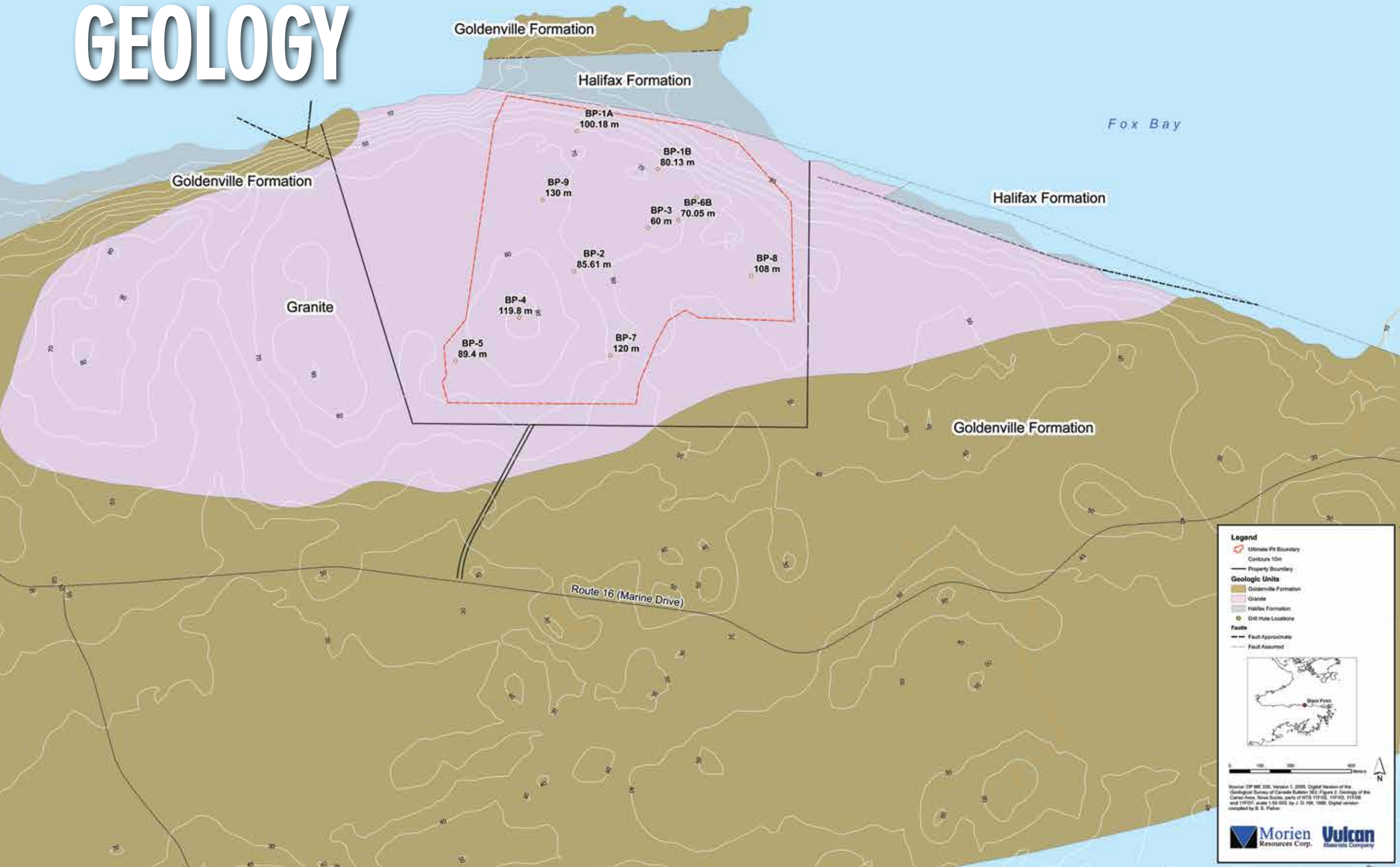
Years 5 - 10



Years 10 - 15



GEOLOGY



Legend

- Ultimate Pit Boundary
- Contours 10m
- Property Boundary

Geologic Units

- Goldenville Formation
- Granite
- Halifax Formation

- Drill Hole Locations

Faults

- Fault Approximate
- Fault Assumed

Source: CP 92 300, Version 1, 2009. Digital Version of the Geological Survey of Canada Bulletin 362, Figure 2, Geology of the Central Area, Nova Scotia, parts of NTS 111/02, 117/03, 117/06 and 117/07, scale 1:50,000 by J. D. Hill, 1988. Digital version compiled by S. E. Fisher.

Morien Resources Corp. **Vulcan Materials Company**

ENVIRONMENTAL STEWARDSHIP AWARDS & RECOGNITION

WE ARE PROUD OF OUR AWARDS FOR ENVIRONMENTAL PROGRAMS.

- 2013 Energy Showcase Award San Diego Gas & Electric (California)
- 2012 NSSGA Environmental Excellence Award - Gold, Silver and Bronze Levels
- 2012 NSSGA Gold Environmental Excellence Award
- 2012 NSSGA Silver Environmental Excellence Award
- 2012 NSSGA Bronze Environmental Excellence Award
- 2012 VTCA-DMM Reclamation Award – Virginia Transportation Construction Alliance
- 2011 NSSGA Environmental Excellence Award - Gold, Silver and Bronze Levels
- 2011 Award for Excellence in Reclamation – California Department of Conservation, Office of Mine Reclamation (OMR)
- 2010 NSSGA Environmental Excellence Award - Gold, Silver and Bronze Levels
- 2010 Corporate Sustainability Award – Industrial Environmental Association
- 2010 Solid Waste Reduction Award, Irwindale, CA Chamber of Commerce
- 2010 National Ready-Mixed Concrete Association Green-Star Certification
- 2009 NSSGA Gold Environmental Excellence Award

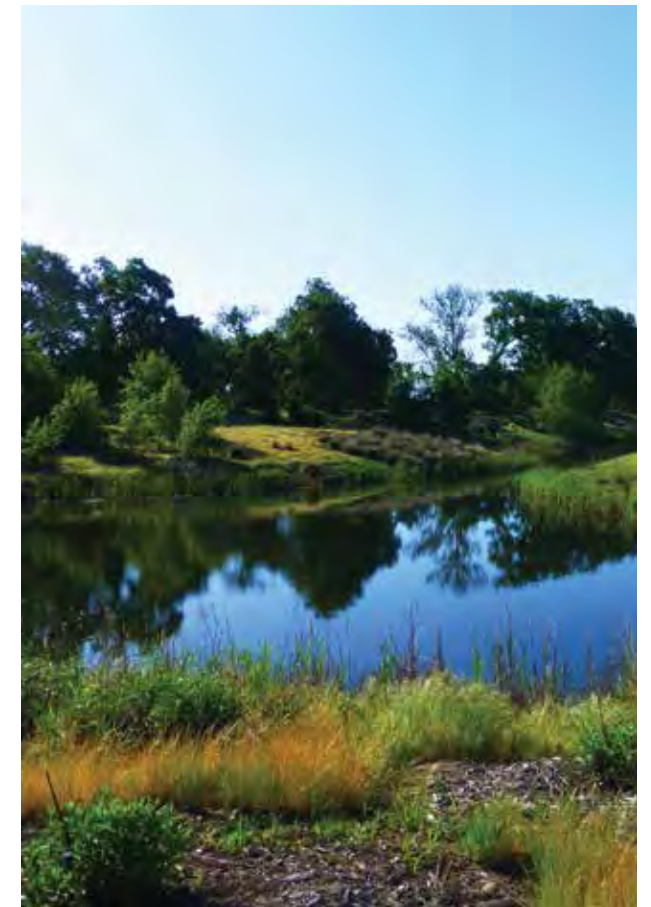
LAND MANAGEMENT

WE ARE COMMITTED TO RESPONSIBLE STEWARDSHIP OF THE LAND

A former quarry operation, the Rank Island project preserved ponds (pictured), wetlands and riparian corridor zones along the San Joaquin River in Fresno County, California

2011 Award for Excellence in Reclamation from State of California's Department of Conservation, Office of Mine Reclamation

300-acre project site attracts and provides food, water, habitat and open space for over 175 species of wildlife including over 136 species of birds



VULCAN - SAFETY

Protecting the safety and health of our employees are essential priorities for Vulcan. We are proud to have our employees and facilities recognized for their operational excellence, exemplary efforts in safety and health.

AWARDS & RECOGNITION

- 2013 Excellence in Hearing Loss Prevention Award (Manufacturing Sector) National Institute of Occupational Safety and Health (NIOSH) in partnership with National Hearing Conservation Association (NHCA)
- 2013 National Ready Mixed Concrete Association Excellence in Safety – Gold, Silver and Bronze Levels
- 2012 Eagle Award of Excellence – Safety Award Georgia Construction Aggregates Association
- 2012 National Ready Mixed Concrete Association Excellence in Safety – Gold, Silver and Bronze Levels
- 2012 Safety Awards, Virginia Transportation Construction Alliance (VTCA) and Virginia Department of Mines, Minerals and Energy-Division of Mineral Mining (DMM)
- 2012 California Construction and Industrial Materials Association – Safety Award
- 2011 Sentinels of Safety – Mine Safety and Health Administration (MSHA)
- 2011 NSSGA Sterling Safety Award – Bronze
- 2011 NSSGA Safety Excellence – Gold, Silver and Bronze Levels
- 2011 Safety Awards, Virginia Transportation Construction Alliance (VTCA) and Virginia Department of Mines, Minerals and Energy-Division of Mineral Mining (DMM)
- 2010 NSSGA Safety Excellence – Gold, Silver and Bronze Levels
- 2010 NSSGA James M. Christie Safety & Health Professional Award
- 2010 NSSGA Berry Wendt Award (Safety & Health)
- 2010 Outstanding Contribution to Mine Safety and Health, International Society of Mine Safety Professionals
- 2010 Sentinels of Safety – Mine Safety and Health Administration (MSHA)
- 2010 National Ready Mixed Concrete Association Excellence in Safety Award – Gold, Silver and Bronze Levels
- 2009 NSSGA Safety Excellence – First, Second and Third Place Awards



Delineated Wetlands

Wetland Type

- Delineated via Air Photo
- Bog
- Coastal Marsh
- Disturbed
- Fen
- Forested
- Riparian Forested
- Riparian Shrub
- Shrub

REFERENCES:
 Base data is from NSDNR (2010), GeoNova (2009), GeoBee (2007), Wetland data from NSDNR (2007), Property Boundary from GIS (2011), Access Road location provided by AECOM (2011), Rare plant and Lichen locations from AMEC report (2011), Imagery and LIDAR derived contours from Leading Edge Geomatics (2011), Delineated Wetlands from AECOM (2011).

Map Features

 Building	 Cut Line (> 100m long & < 20m wide)	 Transmission Line	 Waterbody
 Approximate Lichen Location	 Major Road	 Property Boundary	 Bog or Fen
 Ramalina thrausta	 Secondary Road	 Study Area Boundary	 Marsh
 Peltigera leucophlebia	 Tertiary Road	 Contour Line	 Swamp
 Approximate Rare Plant Location	 Watercourse	 Watercourse	
 Listera australis			

N

0 200 400 600
Meters

DATE: February 17, 2014
 SCALE: 1:12,000
 JOB NO.:
 REVISION: 9
 DRAWN: CA-SEO

Figure 6 - Wildlife Habitat and Known Locations of Species of Concern

Proposed Black Point Quarry Project
 Morien Resources Corp.

EXISTING ENVIRONMENT

LAND

- Thin soil hosting a mosaic of vegetation types: lichen covered rocks, tall shrub barren, and some coniferous forest
- Patches of mixed forest and wetlands
- Three small unnamed watercourses and Fogherty Lake - no fish habitat is present on the property



MARINE

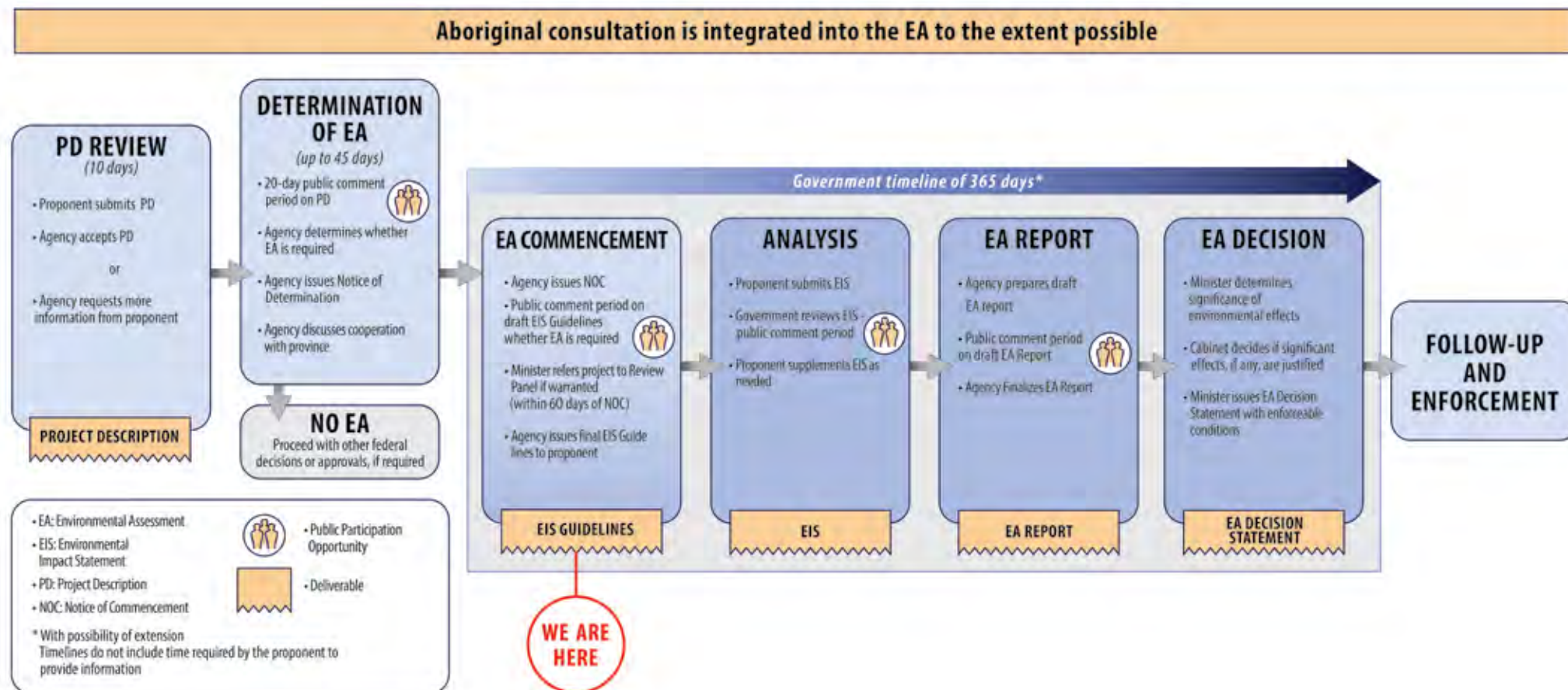
- Cobble, rock and large boulders
- Algal covered bottom provides habitat for many marine fauna including molluscs, lobster, fish and invertebrates

ENVIRONMENTAL STUDIES COMPLETED

- Ambient noise condition assessment
- Fish habitat assessment
- Surface water quality assessment
- Wetland type identification and delineation
- Marine habitat assessment
- Marine sediment survey
- Vascular plant and lichen surveys
- Odonates surveys (dragonflies and damselflies)
- Multi-season bird surveys
- Mammal, reptile and amphibian surveys

FEDERAL ENVIRONMENTAL ASSESSMENT PROCESS

ENVIRONMENTAL ASSESSMENT PROCESS MANAGED BY COMPANY



May 2013 www.ceaa-acee.gc.ca

INFORMATION & ENGAGEMENT

Project website: www.morienres.com/black-point

Canadian Environmental Assessment Agency (CEAA)

Black Point Project Website:

<http://www.ceaa-acee.gc.ca/050/details-eng.cfm?evaluation=80064>

- Vulcan / Morien Hosted Public meetings
- Newsletter
- Public Notices
- Community Liaison Committee
- Fisheries Liaison Committee
- First Nations Engagement
- Four Public Participation Opportunities during the Federal Environmental Assessment Process



PROJECT SCHEDULE

TIMELINE (PRELIMINARY)

February 28, 2014	File Project Description
May 1, 2014	Posting of the Notice of Commencement
September 1, 2014	Environmental Baseline Studies (completion)
November 1, 2014	File Environmental Impact Statement (EIS)
September 1, 2015	Environmental Assessment Approval
2016-2017	Permitting, Market Evaluation and Equipment Acquisition
April 2018 - April 2021	Site Preparation and Construction
May 2021	Commence Operations
2070 +	Decommissioning and Reclamation

*The project timeline is based on the Canadian Environmental Assessment Agency (CEAA) conducting an Environmental Assessment review. Should the project be subject to an EA by Panel Review the EA process could take up to two years.



PROJECT BENEFITS

LOCAL EMPLOYMENT

- Significant family-waged employer in the region
- Site development phase: 155 persons directly and indirectly
- 120-150 direct and indirect jobs during peak production (50 – 60 full time employees at operation)
- Opportunities for subcontractors, manufacturing, and supply of equipment/ machinery

REGIONAL ECONOMIC BENEFITS

- Jobs and training in community and region
- Increased municipal and provincial tax and royalty revenue
- Use of local personnel, goods and service
- Community initiatives such as education, arts and culture projects



AGGREGATE MARKET



In the U.S. market, the majority (80% or more) of aggregates are transported by truck from the quarry to the consumer. This form of transport is expensive and limits the typical aggregate operation to a market radius of about 80 kilometres.

Coastal markets within the U.S. are increasingly using high volume modes of transportation such as rail and ship to minimize costs.

The southeastern U.S. aggregate market is a prime target for bulk transported aggregate due in part to the geologic absence of suitable aggregate resources in coastal areas.

AGGREGATES EXPLAINED

WHAT ARE AGGREGATES?

Aggregates include crushed stone, sand and gravel, primarily used in construction. The building blocks of our society, aggregates-based construction materials, such as asphalt and ready-mixed concrete, are used to build highways and roads, and other public works projects. Aggregates are used in the construction of housing, nonresidential buildings, commercial and industrial facilities, railroad ballast, and in non-construction uses, including agricultural and various industrial applications.

AGGREGATE END USES

Aggregates are the principal component of concrete and asphalt;

- Concrete is 81-85% aggregates
- Asphalt pavement is approx. 95% aggregates

Its end uses include housing construction, highways, roads, streets, and other public works projects.

CORRECT SPECIFICATIONS

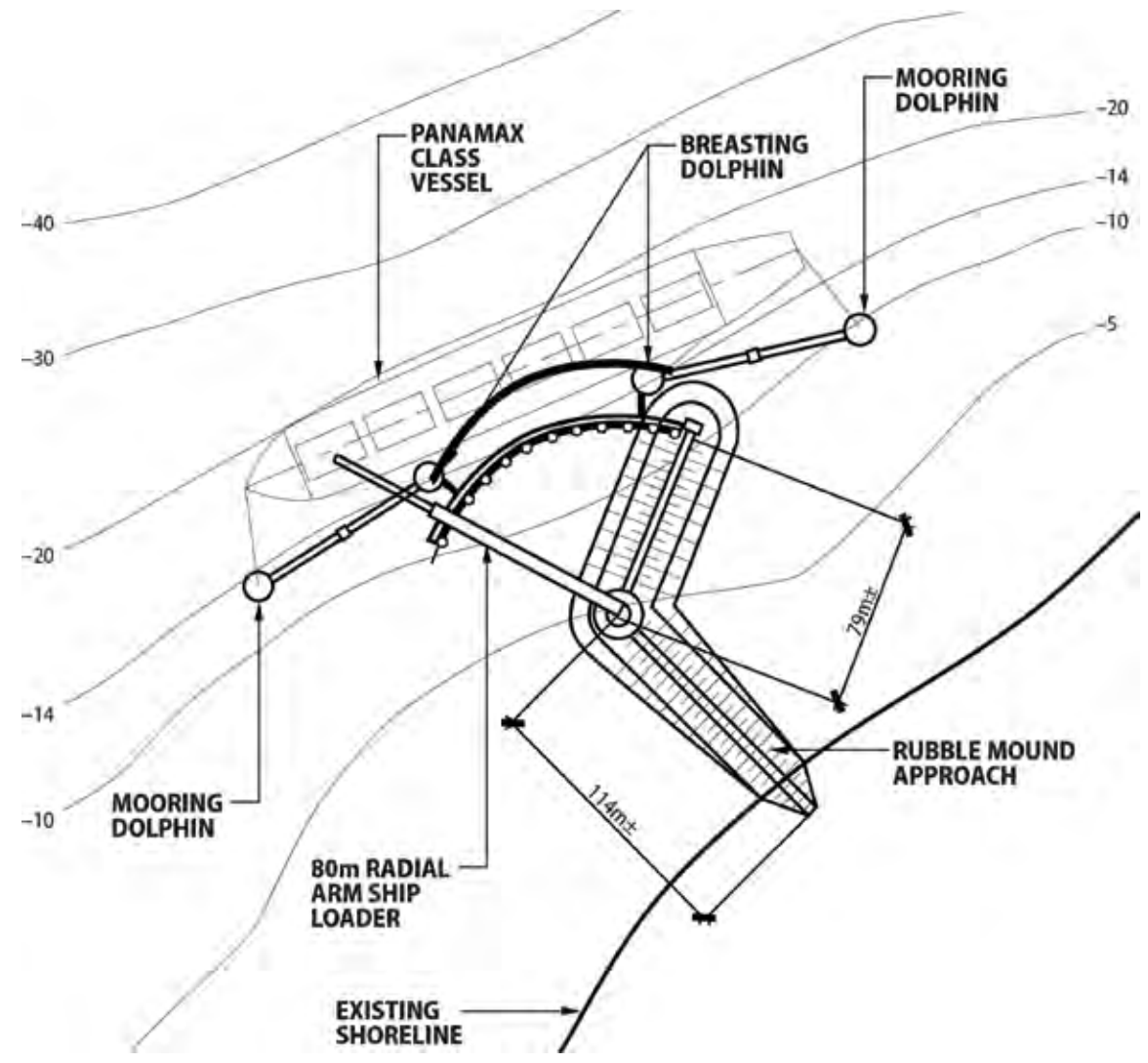
The specifications for concrete and asphalt pavement have become more rigorous in recent years as engineers seek to improve the durability of their products. As a result, not all bedrock or gravel can be used for concrete or asphalt.

Individual rock fragments must be hard, tough, chemically stable, free of deleterious elements, and have the right shape, surface texture, porosity and density.



MARINE TERMINAL

- 200 m long marine terminal and load-out facility
- Adjacent to processing area
- Equipped with an anchored radial arm ship loader
- Accommodate Panamax-class ships that can carry 50 to 80K tonnes



PRODUCTION PLAN

Average annual production rate: 1.0 million tonnes (MT)

Anticipated peak annual production: 2 to 5 million sellable tonnes (up to 7.5 MT total annual production before processing)

Quarry and processing plant will operate for nine months of the year, weather permitting.

Marine operations will run up to 24 hours per day, 7 days per week, 12 months per year to accommodate shipping schedules and the time needed to load ships.

Approximately 2 ships per week at maximum production of 5 MT per annum (~50K tonnes / ship)



AGGREGATE MINING PROCESS

Quarry will be developed using drilling and blasting.

Rock will be loaded by front-end loaders or hydraulic shovel into haul trucks for transport from the working face to the primary crusher(s).

After being reduced in size in the primary crusher, the rock will be transported via conveyor to a (surge) pile located near the secondary crusher(s) that will feed the processing plant.

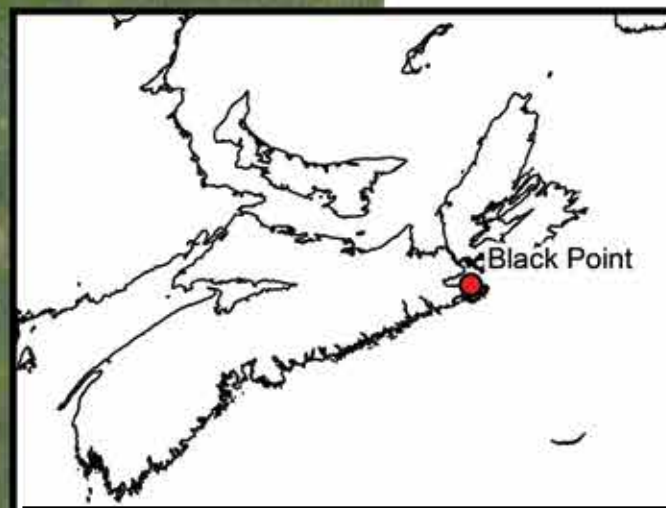
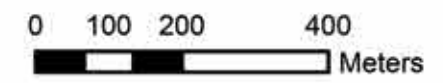
The different aggregate products will be stockpiled according to size and rinsed on wash screens prior to being loaded onto ships or barges for transport to end use markets.





Legend

- Property Boundary
- ⬮ Ultimate Pit Boundary
- 🟡 Fill Areas
- ⚡ Load Out
- 📁 Plant Location
- Berms
- Power Line
- ▬ Entrance Road
- Property Buffer 30m
- 🌊 30 m Buffer
- 🌫 Undifferentiated Wetlands
- 🌊 Coastal Marsh
- 🌊 Creeks



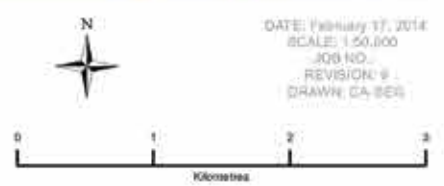
To Route 16



REFERENCES:
 Base data is from NSDNR (2010), GeoNova (2009), GeoBase (2007).
 Wetland data and Wilderness Area from NSDNR (2007). Property Boundary
 data from SNS (2011). Access Road location provided by AECOM (2011).

Map Features

- Building
- Cut Line (> 100m long & < 20m wide)
- == Major Road
- Secondary Road
- Transmission Line
- Property Boundary
- Study Area Boundary
- Contour Line
- Watercourse
- Waterbody
- Wilderness Area
- NSDNR Wetland



DATE: February 17, 2014
 SCALE: 1:50,000
 JOB NO.:
 REVISION: 9
 DRAWN: CA-BER



Figure ES - 1
Project Location
 Proposed Black Point Quarry Project
 Morien Resources Corp.

BLACK POINT QUARRY

AGGREGATE QUARRY

- Class A Construction Aggregate
- Estimated volume: 400+ million tonnes
- 354 hectare undeveloped property
- Finished quarry to occupy 180 hectares



MARINE TERMINAL

- 200 meter long jetty
- Accommodate 60,000 DWT (Panamax) bulk carriers
- Aggregate transported to US eastern and Gulf coasts



PROJECT SUMMARY

- Project lifespan: 50+ years
- Employment: 120-150 direct and indirect jobs during peak production (50 – 60 full time employees at operation)
- Capital expenditure: \$80-\$110 million



PRIMARY PROJECT COMPONENTS

- Unpaved access road from Route 16 into the quarry
- Quarry & primary crushing area within or just outside the quarry pit
- Processing plant for crushing, screening, washing & stockpiling
- Administration buildings (modular design)
- 200 meter long marine terminal and load-out facility



MORIEN RESOURCES CORP.

- Nova Scotia-based mineral exploration and development company
- Started trading on the Toronto Venture Stock Exchange (TSX-V: MOX) in November 2012
- Spin-out company from local resource company, Erdene Resource Development Corp.
- Morien, and formerly Erdene, have been working with the Municipality of the District of Guysborough since 2007 to advance the Black Point Quarry Project.
- Morien holds a 25% interest in the Donkin Coal Project in eastern Cape Breton



VULCAN MATERIALS COMPANY

- Leading producer of construction aggregates in the U.S.
- Operates 342 aggregates facilities, serving markets in 18 U.S. states, the District of Columbia, Mexico and the Bahamas, employing 7,211 people
- Public company with shares traded on the New York Stock Exchange
- Safety is our #1 priority. Protecting the health, safety and well-being of our workforce is paramount.
- Developing wildlife habitat buffer lands around our facilities has been an important environmental program for Vulcan. We have 43 certified wildlife habitats at sites across the U.S., ranking us second in the nation with certified habitats and third globally.
- We take pride in being a trusted neighbor. We have 286 schools in our partners-in-education program across the U.S., and we encourage and provide support to our employees who participate in community service activities.
- Recognized as one of *Fortune* Magazine's Most Admired Companies, we ranked in the Top 10 in Social Responsibility twice in the last decade, and Top 10 for Use of Corporate Assets and Long-Term Investment.

